

SCHONSTEDT® 
from RADIODETECTION

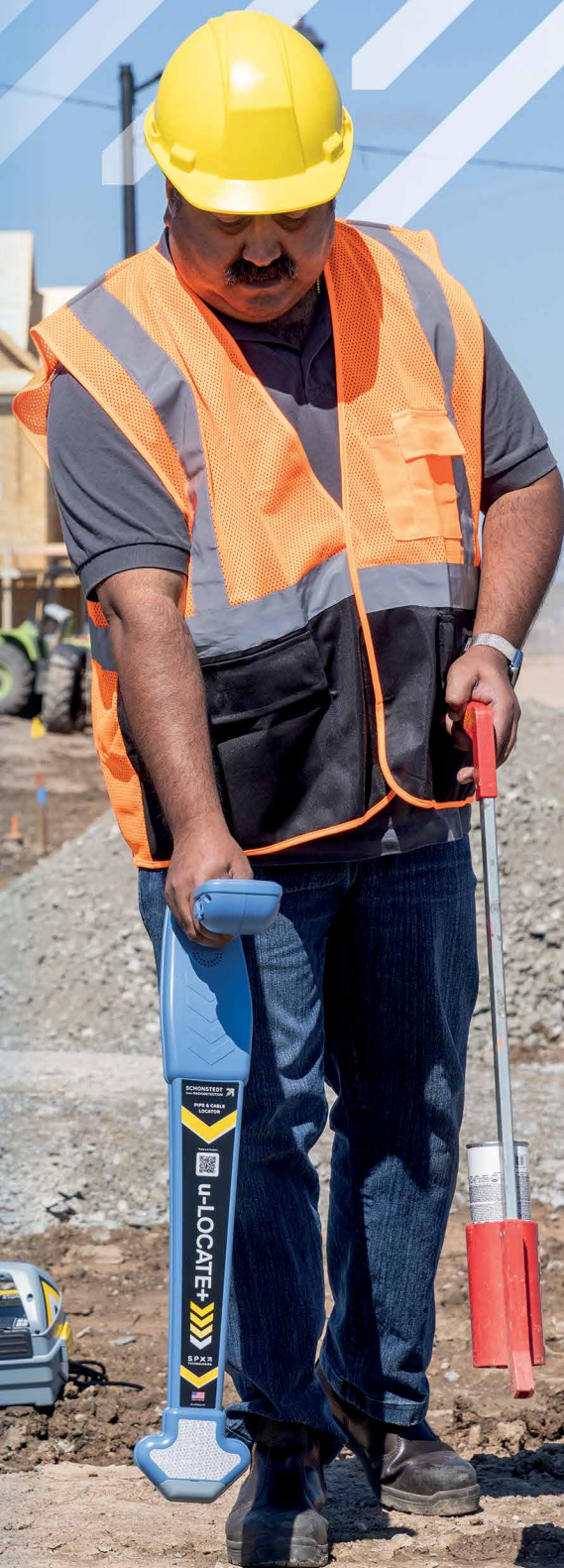
u-LOCATE™

Locate
underground
utilities quickly,
accurately
and safely

Trust your plans - but confirm
before you dig with the
Schonsted u-LOCATE
Pipe & Cable Locator

SPX 
TECHNOLOGIES

Lightweight. Easy to use. Prevent damages. Protect lives.



Verify Before You Dig

The Risk is Real

Published data* shows that the majority of damages to underground utilities are due to **unmarked or mismarked infrastructure**.

By integrating utility locating into your standard operating procedure, you and your workers can significantly **reduce the risk of accidents**, improve overall job site safety and protect your company's reputation.



u-LOCATE: An Affordable Solution

The Schonstedt u-LOCATE range of Avoidance Tools help **excavators, construction contractors, landscapers or fence workers** avoid accidental damage to buried utilities. Designed for ease of use, this lightweight tool delivers the confidence you need to prevent costly utility strikes.

If your work involves digging, the u-LOCATE is your go-to tool for working smarter and staying safe.

Delivers the confidence
you need to prevent
costly utility strikes

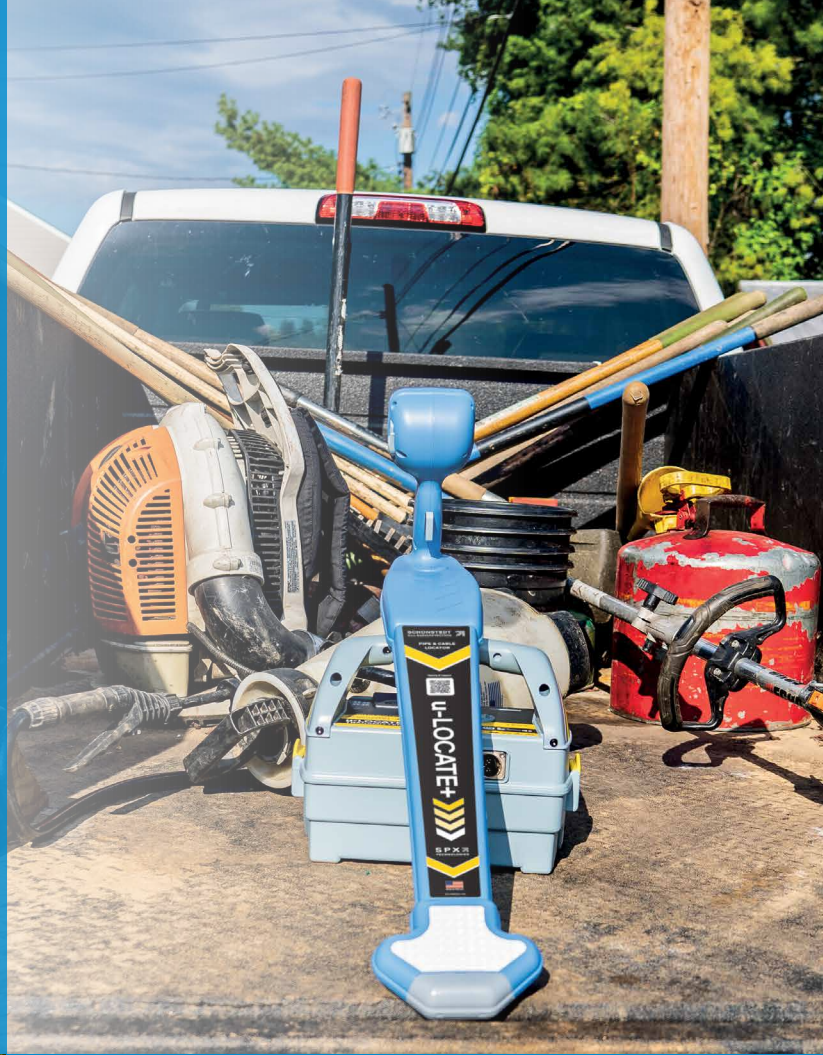
* Dirt Report 2023, CGA

A choice of two models available:

u-LOCATE

A Versatile Utility Detection Tool

- **Versatile and reliable:** Designed for efficient and safe operations in diverse environments and situations
- **Accurate Detection:** High-frequency active signal for precise location of water, gas and telecom lines
- **Safe Power Line Identification:** Passive mode allows for safe identification of live power cables
- **Easy-to-Use:** Left/right guidance arrows and depth estimation features simplify the locating process



u-LOCATE+

More Features, Added Performance

- **Enhanced Capabilities:** Advanced features for superior performance
- **Extended Range:** Extended frequency range enables detection of more utilities over longer distances
- **Sonde Mode:** Ideal for tracing 512 Hz sondes or inspection cameras in non-metallic pipes, ducts and concrete conduits



u-LOCATE Transmitter

Energize buried utilities

- Included with every u-LOCATE and u-LOCATE+ system
- **Compact and Efficient:** The compact 1-watt transmitter adds a beacon signal to metal infrastructure directly or by induction
- **Versatile:** Use the accessory port to extend its capabilities

High contrast screen provides clarity even in bright sunlight

Light weight and ergonomic design for comfortable use

Headphone socket, for improved audio isolation

Visual and Audible Indicators

The information display areas for the receiver are easy to understand. In addition, the receiver has visual indicators to facilitate operation in heavy traffic or noisy areas. The Display shows Battery level, gain level, frequency and mode, target direction arrows and audio volume.

Rugged construction

Shock resistant, casing protects against knocks, drops, water and dust

u-LOCATE transmitter

Locate more utilities with dual power capability



High visibility reflective design helps protect operators and equipment



Accessory base tray

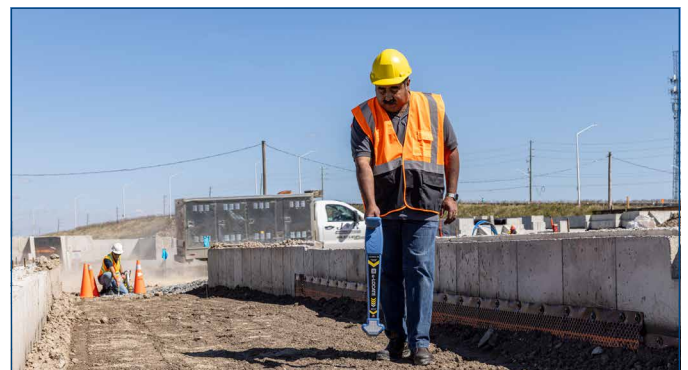
Accessory connection socket

**1 YEAR STANDARD WARRANTY
AND GLOBAL SERVICE NETWORK
PROVIDE PEACE OF MIND**



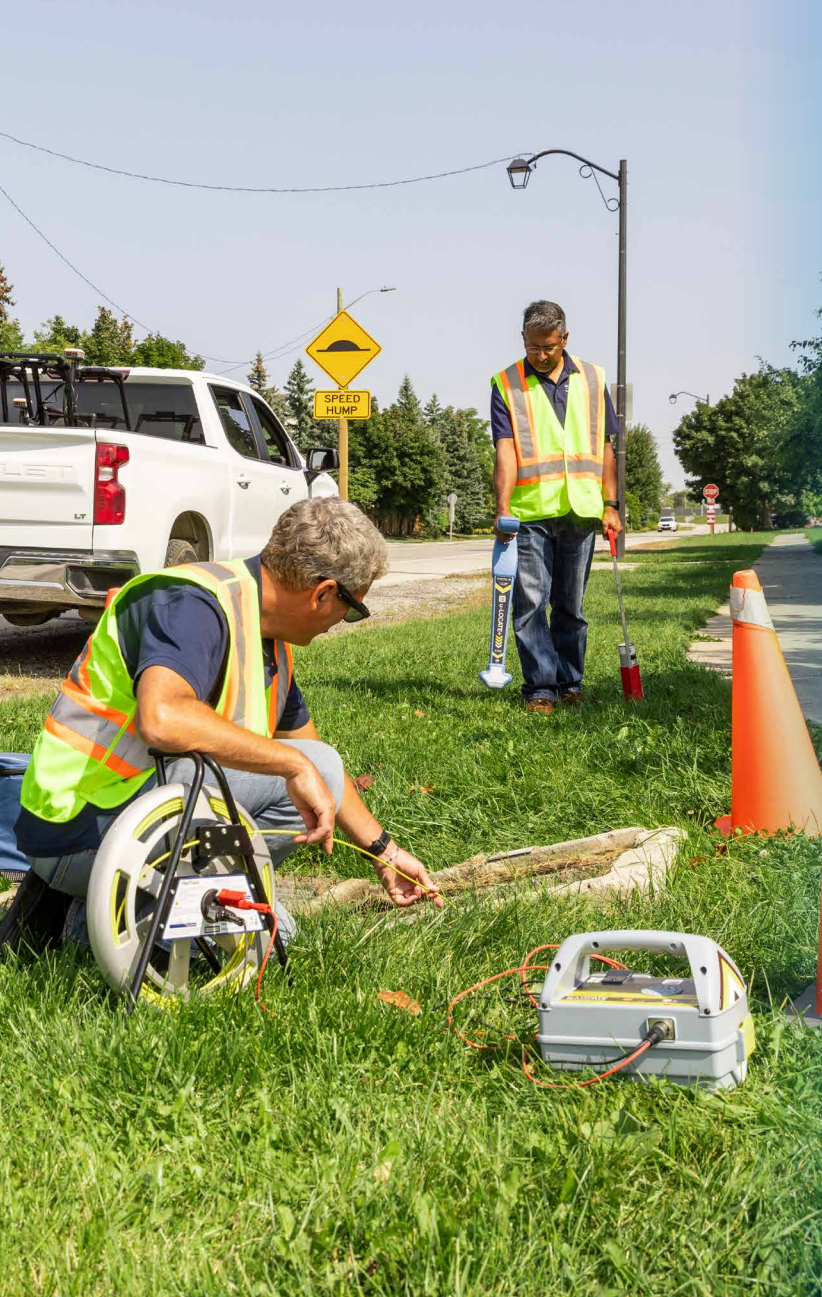
Accessory storage tray

Conveniently store accessories, including the supplied magnet, earth stake and direct connection leads.



Sonde mode

Locate non-conductive pipes or cable ducts and conduits at depths of up to 15' (4.5m), dependent on Sonde type.



Extend your capabilities

Add accessories
to optimize the
u-LOCATE system
to your specific needs



FlexiTrace™



Backpack



Sondes



Clamps

u-LOCATE range

	u-LOCATE	u-LOCATE+
Operating frequencies	82kHz	33kHz, 82kHz
Sonde	-	512Hz
Passive mode	50/60Hz	50/60Hz
Max Depth Active mode	19' (5.8m)	19' (5.8m)
Max Depth Sonde mode	-	15' (4.5m) dependent on Sonde type
Positional Accuracy	5%	
Battery requirements	6 x AA Receiver, 4 x D Transmitter	
Usage hours	20 hours	
Audio output	10-1500Hz (determined by signal strength) 0-70 dB SPL (volume controlled)	
Ingress Protection rating	Weatherproof to NEMA3S and IP65 (Rx) and IP54 (Tx)	
Construction	High Impact ABS Plastic	
Operating temperature	-10 to + 50°C (14 to 122°F)	
Weight of Kit including batteries	9lbs	
Warranty	12 months (extendable to 3 years)	

Our Mission

Provide best in class equipment and solutions, to prevent damage
to critical infrastructure, manage assets and protect lives.

Our Vision

To be the world's leader in the management of critical infrastructure and utilities.

Our Locations



USA

Raymond, ME
Kearneysville, WV

Canada

Mississauga, ON



Europe

United Kingdom HQ
France
Germany
The Netherlands



Asia Pacific

India
China
Hong Kong
Australia

Visit: **www.schonstedt.com** Follow us on:



Schonstedt Instrument Company (USA)

100 Edmond Road, Kearneysville, WV 25430 USA

Toll Free: +1 888 367 7014 Tel: +1 304 724 4722 schonstedt.info@spx.com