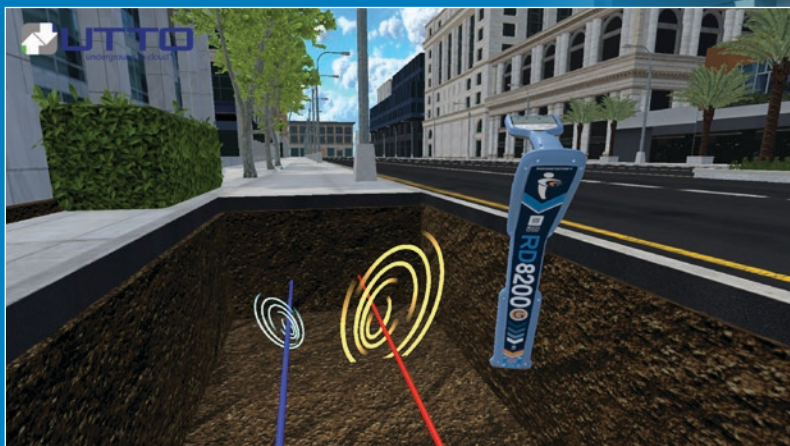


# RADIODETECTION®

## Locate Performance Management™

UTTO® Training Simulator

Mixed-reality training,  
built for real-world utility locating



**SPX**  
TECHNOLOGIES





# Simulated Precision

## Build readiness for real-world utility locating

Utility locating requires technical knowledge, hands-on skill, and consistency in execution. Training quality can vary, and field errors may result in safety risks, service disruptions and costly rework.

The Locate Training Simulator provides a **controlled, repeatable mixed-reality training environment** that allows technicians to practice realistic locating scenarios before entering the field.

By combining a modified Radiodetection locator with digitally generated underground conditions, technicians experience real-world locating responses without field exposure.



Accredited by NULCA®, the simulator is designed to accelerate skill development and reinforce core pipe and cable locating fundamentals.



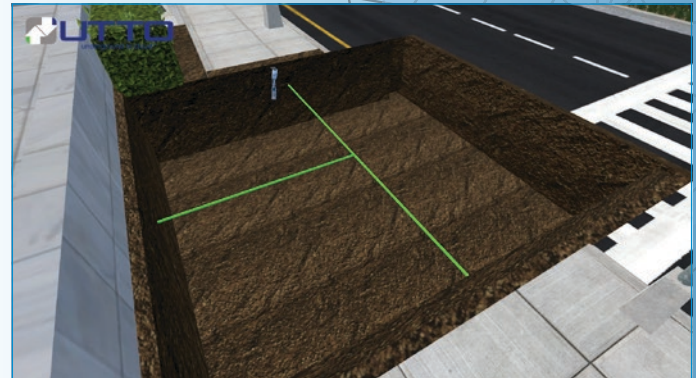
Highly portable training,  
ready to go within minutes



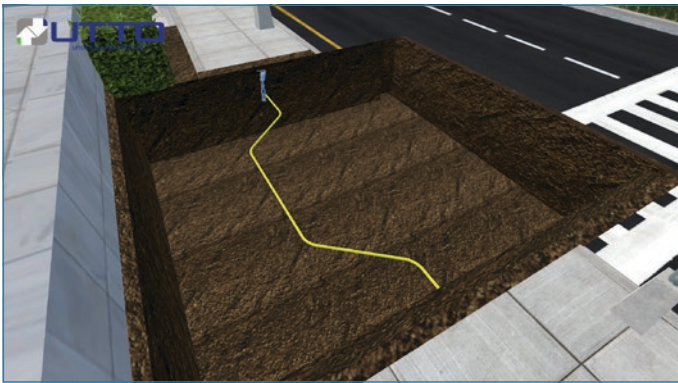
# Simulated Training Environments



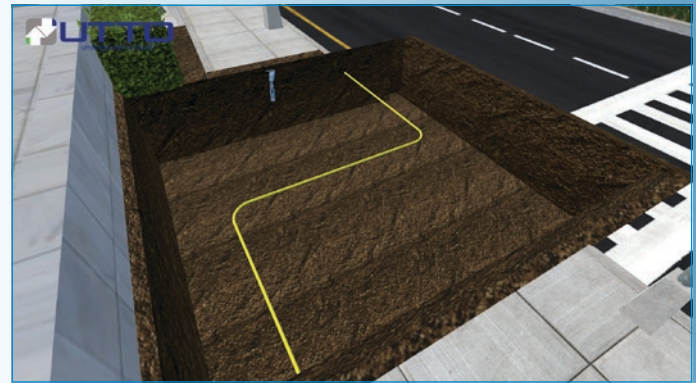
Mark Up



T Junction



Offset Locate



S-Curve



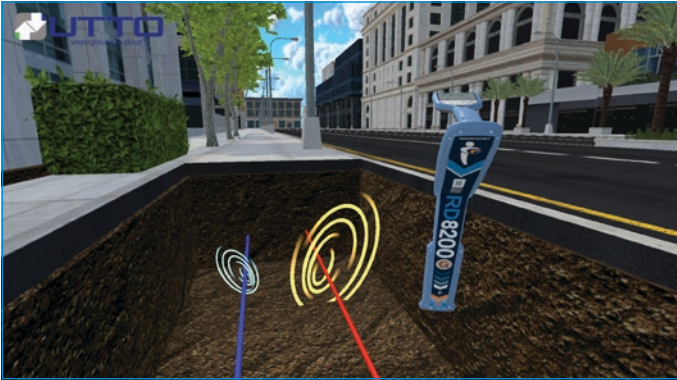
90 Degree Curve



Dual Conductor

VR training can help build confidence  
and support technician decision-making

# Key Benefits



## Underground Visualization

Use VR to explore 3D underground infrastructure and understand site-specific locating challenges in a simulated environment.



## Customer Confidence

Reinforces consistent locating practices and supports customer confidence in field readiness.



## Preparation for Real-World Scenarios

Builds technician readiness for complex scenarios and supports sound escalation and re-locate decisions.



## Training & Certification

Supports standardized training, assessment, and certification using objective, data-driven performance criteria.

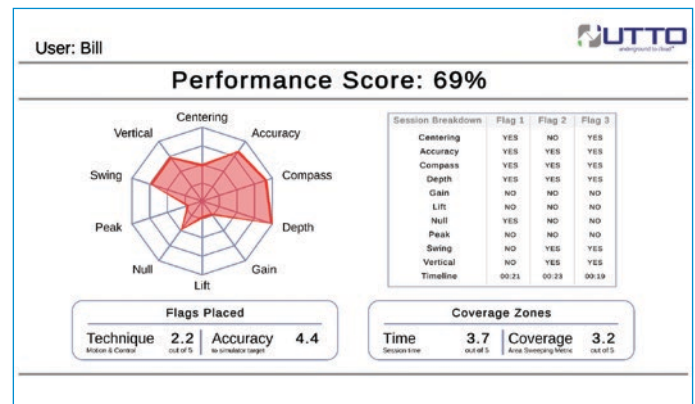
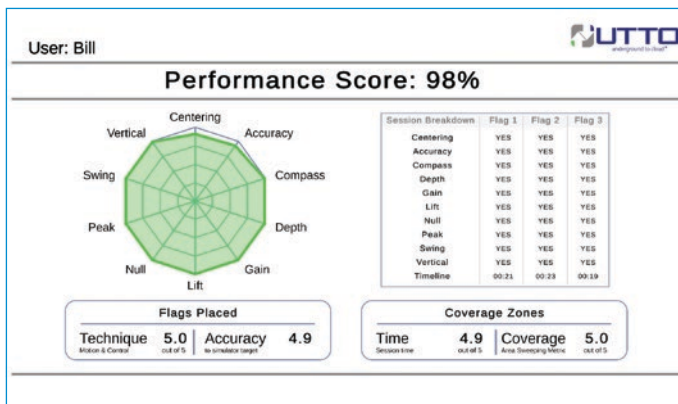
Simulator controlled environments,  
with 3D models of underground infrastructure



# Performance Development and Training Interface

## Performance Development in a Controlled Environment

The Training Simulator offers detailed analysis and repeatable performance checks designed for training at scale.



## Training Interface

Scenarios

Select Views

View Scoring

Power and  
Frequency  
Visualization

Active Trainee  
(from Class)



Flag/Capture  
Count

Data analysis supports performance development  
in repeatable and controlled environments

# Basic Specifications

## Communications

**Comms:** Bluetooth® Wireless Technology & Wi-Fi 6E

**Software Updates:** Remote updates from UTTO®

**Mobile Devices:** Laptop

## Power Supply

**Battery:** Rechargeable Lithium Ion

**Operation time:** 3 hours typical VR Headset\*

**Charge time:** 1 hour typical via USB-C

\*Can operate while charging on external pack

## Physical/Environmental

**Weight:** 4 lbs. / 1.8 kgs (shipping)\*

**Dimensions:** 21" x 12" x 12" (53cm x 30cm x 30cm)

**Operating Temperature:** 32 - 104°F / 0 - 40°C

min. humidity 5%, max. humidity 95%

\*Does not include Locate Receiver

## Package Contents

**RD8200® Locate Receiver**

(modified for Training Simulator use)

**Meta Quest 3 Headset and Controllers  
or Vive Tracker**

**Laptop & Charger**

**UTTO Locate Simulator 2.0 Enterprise Training  
Software License – 1 year**

**Carry Case**

**Wi-Fi Router for offline mode**

A large external monitor or Television (not included) is recommended.



Visit: [www.radiodetection.com](http://www.radiodetection.com)

Follow us on: [!\[\]\(26cddea01ddf7f002af4ba779c4999ee\_img.jpg\)](#) [!\[\]\(6904bb7f8eb436becdb64d9ce0b725e2\_img.jpg\)](#) [!\[\]\(cd24b41454a325379da660039ab603ae\_img.jpg\)](#)

Copyright © 2026. Radiodetection Ltd. All rights reserved. Radiodetection is a subsidiary of SPX Technologies, Inc. Radiodetection, Locate Performance Management, and RD8200 are either trademarks or registered trademarks of Radiodetection in the United States and other countries. UTTO is a registered trademark of IPEG Corporation. The Bluetooth® word mark and logos are registered trademarks owned by Bluetooth SIG, Inc., and any use of such marks by Radiodetection is under license. NULCA is a registered trademark of the National Utility Locating Contractors Association. Meta, Meta Quest and any associated logos are trademarks of Meta Platforms, Inc. and/or its affiliates. Vive and Vive Tracker are trademarks or registered trademarks of HTC Corporation and its affiliates. Use of these names is for identification purposes only and does not imply affiliation or endorsement. Use of these names is for identification purposes only and does not imply affiliation or endorsement. All other trademarks are the property of their respective owners. Photos are indicative, and products received may not be identical to those shown. This document may not be copied, reproduced, transmitted, modified or used, in whole or in part, without the prior written consent of Radiodetection Limited.

Scan to see  
a full list of  
our office  
locations

