



 **Where Ideas Meet Industry**



Radiodetection
Dielectric Technologies
AN SPX BRAND

Models 2400PM / 3200PM

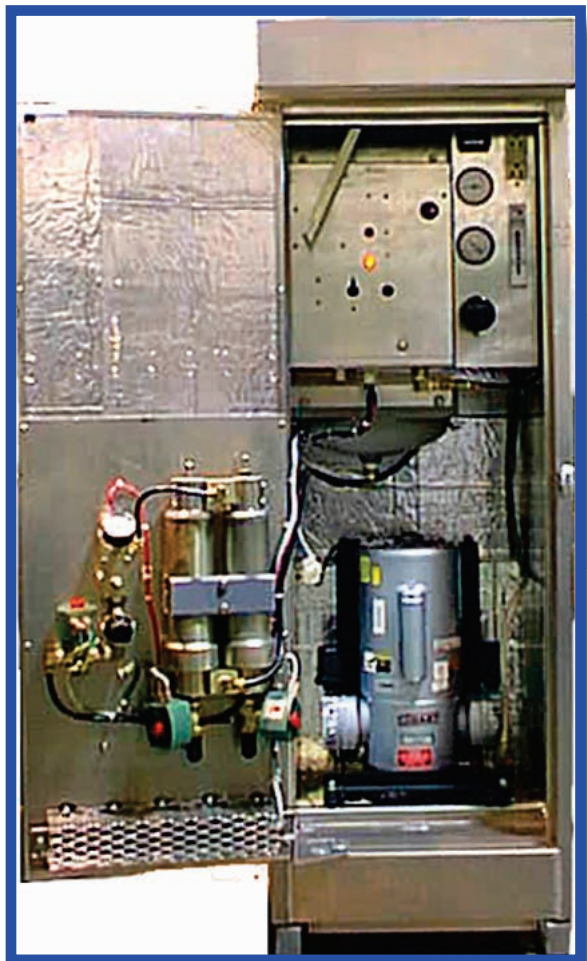
Pole Mounted Air Dryers



The 2400PM and 3200PM pole mounted air dryers, are specifically designed to require minimum maintenance and facilitate field repair. The premier feature of these units involves modular components: the compressor, heatless dryer, and electrical modules incorporate quick-connect fitting to speed the replacement of a damaged module. Service or repair of the damaged component may then be performed at a maintenance site or returned to the factory for refurbishment. Another useful feature of these models is the interchangeability of components, thus reducing your requirements for on hand inventory as most components are common to all models of dryers.

The 2400PM / 3200PM pole mounted air dryers are equipped with thermal insulation as well as a thermostatically controlled heater to regulate internal operating conditions through typical seasonal changes. These features allow the PM series air dryers operate in ambient environments of -60°F to 125°F.

The humidity alarm, preset at 2% RH at 70°F, with a humidity bypass is standard to all models. In addition, because of the normally remote installation locations, the pole mounted air dryers are equipped with an adjustable excessive compressor operation alarm, factory set at 10 minutes and field adjustable up to 15 minutes, as well as a power interruption alarm. These units feature a twin tower, heatless drying system with repackable drying towers as well as a long life oilless compressor for optimum pressurization and dry air performance.



Features

- maintenance and repair procedures.
- Electrical control panel features three quick connect removal and utilizes solid state components; (purge timer, humidistat, and excessive operation timer).
- Unit is equipped with a ground fault outlet for use with auxiliary lighting and tools.
- Dielectric's heatless twin tower dryer is designed for years of trouble free operation and drying towers can be repacked if required.
- Door trig included to latch cabinet door in the open position when performing maintenance.
- Humidity bypass automatically vents wet air to the atmosphere in the event of a humidity alarm.
- Built-in hour meter to monitor compressor operation and facilitate maintenance scheduling.
- Excessive operation timer alarms when compressor operates for more than nine minutes continuously.

SPECIFICATIONS

CHARACTERISTICS	MODEL 3200PM	MODEL 3200PM
Normal Output	2400 SCFD	3200 SCFD
Emergency Capacity	3500 SCFD	4100 SCFD
Electrical Requirement	115V-60Hz-1Ph	115V-60Hz-1Ph
Operating Current	11 Amp, 15 Amp w/Heater	13 Amp, 17 w/Heater
Compressor Circuit Breaker	20 Amp	20 Amp
Regulated Air Output	2 - 15 PSIG	2 - 15 PSIG
Height	52½ inches	52½ inches
Width	18 inches	18 inches
Depth	18 inches	18 inches
Weight	200 lbs.	200 lbs.

Specialists in Cable Pressurization

World leaders



Radiodetection is a proud member of the SPX group of companies, which provide technical products and service solutions worldwide.

Radiodetection and its associated companies specialize in the design and manufacture of products for the location and maintenance of underground pipes and cables. Our aim is to be viewed as the supplier of choice of 'high performance' quality equipment using advanced product technologies. We are also committed to both design innovation and customer support.

Technical support



Radiodetection equipment users have easy access to technical support. A call to your regional representative, or the Radiodetection head office, will put you in contact with our team of field-experienced technical experts.

Servicing and repair



Radiodetection has a team of factory-trained service technicians and dedicated service facilities. Turnaround is fast, and costs are very competitive.

Training



Product training for your operators and training personnel is available on your site, or at Radiodetection's headquarters. Training is with qualified instructors and each trainee receives a certificate to confirm they have received the training.

America

Radiodetection

154 Portland Road
Bridgton, ME 04009, USA
Tel: +1 (207) 647 9495
Toll Free: +1 (877) 247 3797
Fax: +1 (207) 647 9496
Email: rd.sales.us@spx.com
Web: www.radiodetection.com

Pearpoint

72055 Corporate Way
Thousand Palms CA 92276, USA
Tel: +1 800 688 8094
Tel: +1 760 343 7350
Fax: +1 760 343 7351
Email: pearpoint.sales.us@spx.com
Web: www.radiodetection.com

Radiodetection (Canada)

344 Edgeley Boulevard, Unit 34
Concord, Ontario L4K 4B7, Canada
Tel: +1 (905) 660 9995
Toll Free: +1 (800) 665 7953
Fax: +1 (905) 660 9579
Email: rd.sales.ca@spx.com
Web: www.radiodetection.com

Europe

Radiodetection Ltd (UK)

Western Drive
Bristol BS14 0AF, UK
Tel: +44 (0) 117 976 7776
Fax: +44 (0) 117 976 7775
Email: rd.sales.uk@spx.com
Web: www.radiodetection.com

Radiodetection (France)

13 Grande Rue, 76220
Neuf Marché, France
Tel: +33 (0) 232 8993 60
Fax: +33 (0) 235 9095 58
Email: rd.sales.fr@spx.com
Web: <http://fr.radiodetection.com>

Radiodetection (Benelux)

Industriestraat 11
7041 GD 's-Heerenberg, Netherlands
Tel: +31 (0) 314 66 47 00
Fax: +31 (0) 314 66 41 30
Email: rd.sales.nl@spx.com
Web: <http://nl.radiodetection.com>

Radiodetection (Germany)

Groendahlscher Weg 118
46446 Emmerich am Rhein, Germany
Tel: +49 (0) 28 51 92 37 20
Fax: +49 (0) 28 51 92 37 520
Email: rd.sales.de@spx.com
Web: <http://de.radiodetection.com>

Asia-Pacific

Radiodetection (Asia-Pacific)

Room 708, CC Wu Building
302-308 Hennessy Road, Wan Chai
Hong Kong SAR, China
Tel: +852 2110 8160
Fax: +852 2110 9681
Email: rd.sales.cn@spx.com
Web: www.radiodetection.com

Radiodetection (China)

Hongfu Mansion, Room 61622
Zheng Ge Zhuang, Bei Qi Jia Town
Chang Ping District
Beijing 102209, China
Tel: +86 (0) 10 8975 5540
Fax: +86 (0) 10 8975 5640
Email: rd.service.cn@spx.com
Web: <http://cn.radiodetection.com>

Radiodetection (Australia)

Unit 14, 5-7 Prosperity Parade
Warriewood NSW 2102, Australia
Tel: +61 (0) 2 9979 8555
Fax: +61 (0) 2 9979 7733
Email: rd.sales.au@spx.com
Web: www.radiodetection.com

To see the full range of products and services provided by Radiodetection visit:

www.radiodetection.com

Radiodetection products are under continuous development and are subject to change, we reserve the right to alter or amend any published specification without notice.

Copyright 2008 Radiodetection Ltd. - SPX Corporation. All rights reserved. Radiodetection Ltd. is a subsidiary of SPX Corporation.



Radiodetection
AN SPX COMPANY



Global Headquarters
13515 Ballantyne Corporate Place
Charlotte, North Carolina 28277
United States

Where Ideas Meet Industry

Where Ideas Meet Industry

www.spx.com